

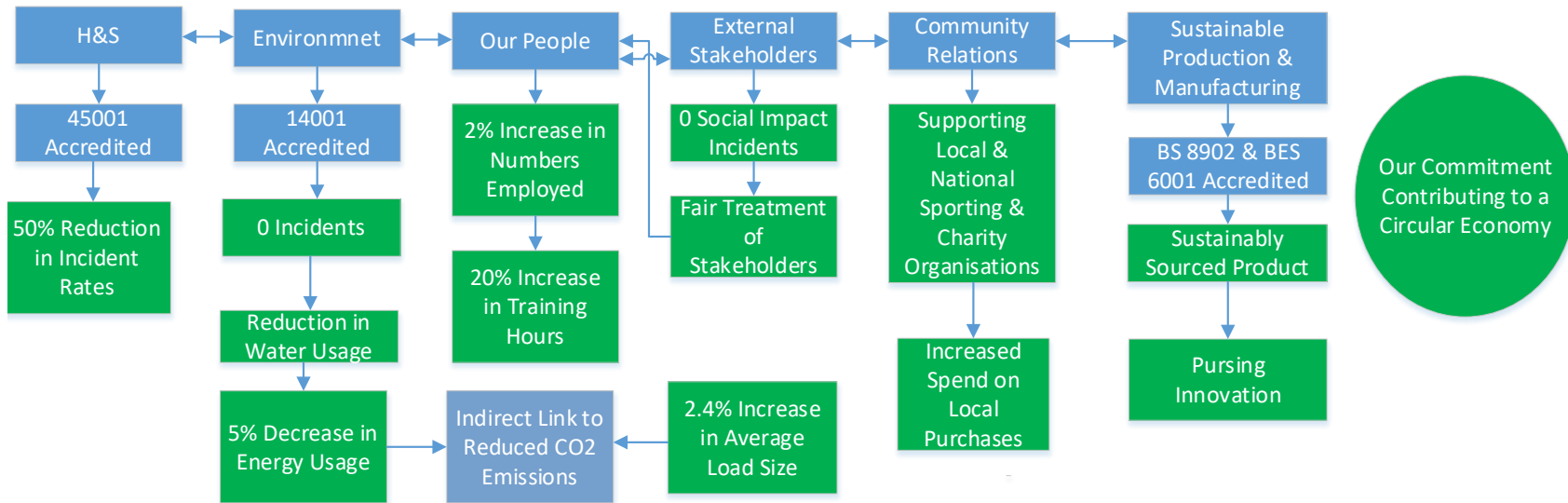


Midland Steel Reinforcement Supplies GB Ltd Sustainability Report 2019

Aims

- Engage with all relevant stakeholders fairly;
- Delivering value through effective supply chain management;
- Operating a safe, sustainable and reliable system to provide exceptional levels of customer service and satisfaction.

Strategic Themes for Success (2019 Performance Compared with 2018)





Materiality Matrix

Materiality Matrix Worksheet



Reporting Period (e.g. Year 2017)

2019

For each aspect establish its significance to both external and internal stakeholders. When determining significance, consider the science and the context behind each aspect, informed by stakeholder opinion and research. Indicate the ability of the organisation to influence performance relating to each aspect. Prioritise the issues using the scale shown. More information on the concept of Materiality can be found in the Global Reporting Initiative (GRI) G4 implementation manual p12.

	Material Aspects	Ability to impact (high/low)	Material Aspects	Ability to impact (high/low)	
Importance to Stakeholders			Safe & Healthy Working Conditions	H	
			Responsible Sourcing	H	
			Primary Use & Material Efficiency	H	
			Product Safety & Stewardship	H	
			Commodity Prices	L	
			Contribution to Diversity and Stability of the Local Economy	H	
			Pursuing Innovation	H	
		GWP & GHG	L	Stable Employment	H/L
		Water Use	L	Talent Attraction & Retention	H
		Biodiversity and Eco-toxicity	L	Workers Conditions	H
				Transport	H

Note: Full Materiality & Maturity Matrix Available on Request by mailing info@midlandsteelsupplies.ie

Legend		Objective / Target Achieved		Objective / Target Not Achieved
---------------	--	------------------------------------	--	--